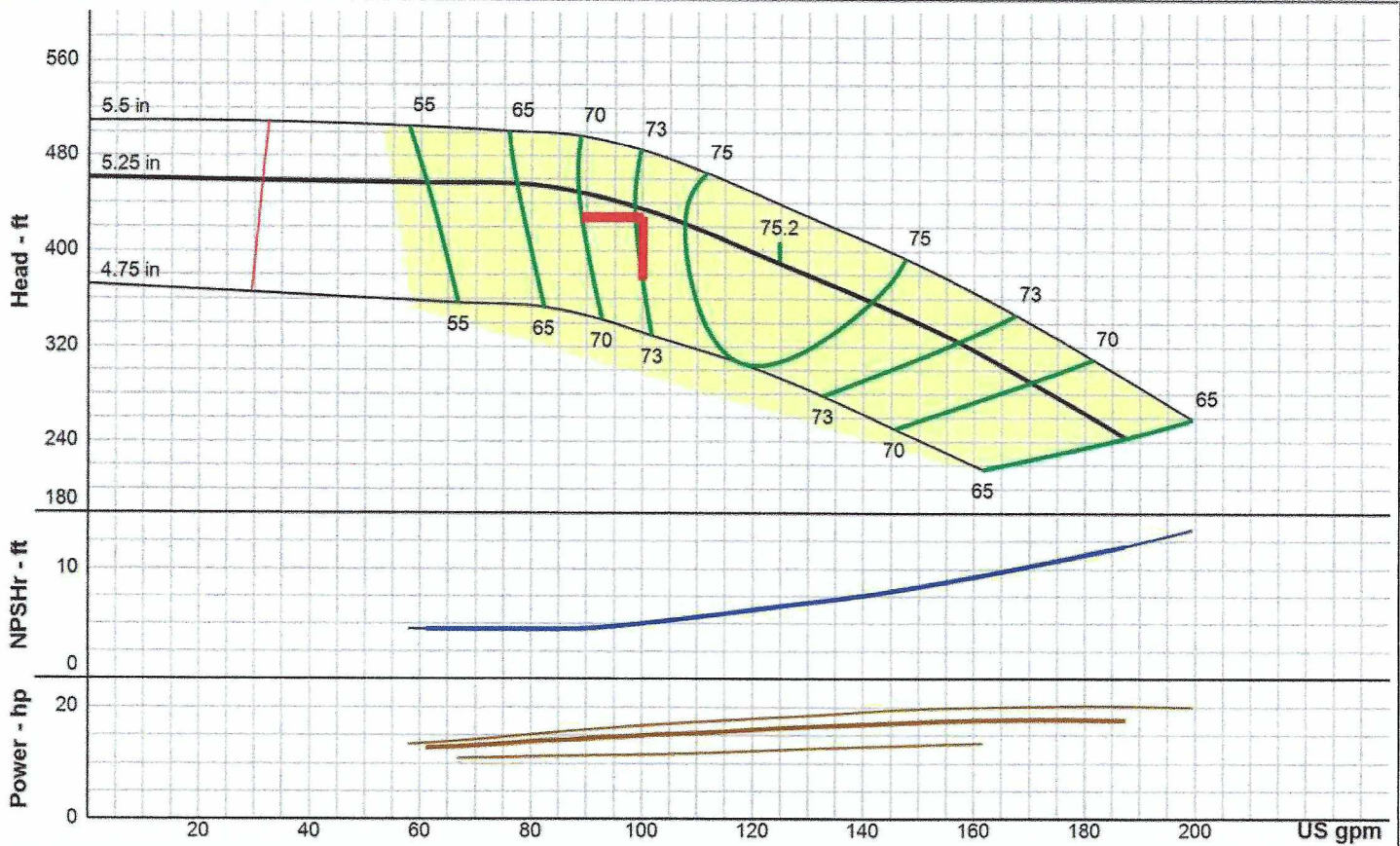


# PERFORMANCE CURVE

Quote ID: 3302-201120-013:0:1 QTY: 1  
VIT-BAT 8RALC, 4 Stages  
Ferguson



Curve & hydraulic data presented is nominal performance based on ANSI/HI 14.6 acceptance grade 2B.  
Design values are guaranteed within the following tolerances: Flow  $\pm$  8%, Head  $\pm$  5%, and optionally either Power + 8% or Efficiency - 5% at manufacturer's discretion.

Specified Flow	100.00 USgpm	Shut Off Pressure (Disch Flange)	199.2 psi	Max Power (NOL) Flow at Max Trim	181.0 USgpm
Specified TDH	428.00 ft	Run Out Flow	187.0 USgpm	Recommended Power	20.00 Hp
Rated Speed	3540 RPM	Run Out TDH (Bowl)	243.0 ft	Allow Service Factor	No
Atmospheric Pressure	14.70 psi	Run Out TDH (Disch Flange)	242.1 ft	kWh per 1000 gal	0.00000
NPSHa at Grade	33.9 ft	Run Out Pressure (Bowl)	105.2 psi	NPSHr at Design	5.1 ft
NPSHa at 1st Impeller	32.4 ft	Run Out Pressure (Disch Flange)	104.8 psi	NPSH Margin at Design	27.4 ft
Fluid	Water	Bowl Efficiency at Design	73.20 %	Min Submergence at Design	15.57 in
Fluid Temperature	68.0 °F	Guaranteed Bowl Efficiency	69.54 %	Thrust at Design	948.8 lb
Specific Gravity	1.0000	Best Efficiency	75.20 %	Thrust at Shut Off	1004.5 lb
Viscosity	1.0017 cP	BEP Flow	125.0 USgpm	Thrust at Run Out	538.6 lb
Vapor Pressure	0.3393 psi	Design Flow % BEP	80.00 %	Bowl Material	Cast Iron
Density	62 lbs/ft <sup>3</sup>	Pump Efficiency	72.18 %	Bowl Material Derate Factor	1.00
Design Flow	100.0 USgpm	Friction Loss at Design	0.06 ft	Impeller Material	Bronze
Min Flow (MCSF)	31.2 USgpm	Power at Design	15.0 Hp	Impeller Matl Derate Factor	1.00
Design TDH (Bowl)	435.0 ft	Guaranteed Power	16.2 Hp	Total Flow Derate Factor	1.00
Design TDH (Disch Flange)	434.2 ft	NOL Power	17.8 Hp	Total Head Derate Factor	1.00
Design Pressure (Bowl)	188.3 psi	Guaranteed NOL Power	19.2 Hp	Total Efficiency Derate Factor	1.00
Design Pressure (Disch Flange)	188.0 psi	Max Power (NOL) Flow	170.0 USgpm	Curve ID	E6409CJPC1
Shut Off TDH (Bowl)	461.0 ft	Max Power (NOL) at Max Trim	20.2 Hp		
Shut Off TDH (Disch Flange)	460.3 ft	Guaranteed Max Power (NOL) at Max Trim	21.8 Hp		
Shut Off Pressure (Bowl)	199.6 psi				

**DO NOT USE FOR CONSTRUCTION UNLESS CERTIFIED**

Certified By	
Project	ITT SN 514495 Replacement BA
Tag	
PO Number	
Serial Number	